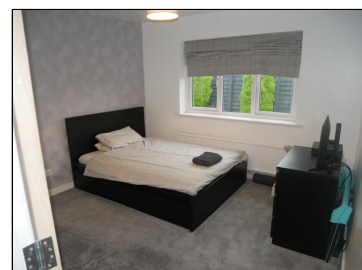


Rent : £1,200.00 PCM

Birch Drive, Silverdale, Carnforth, Lancs, LA5 0SE



Description:

An unfurnished three bedroom bungalow with enclosed garden and driveway parking in Silverdale. The property has been upgraded to offer a stylish fully fitted kitchen and dining room, utility room and store, good sized lounge all with easy to maintain wooden flooring. The master bedroom is located on the first floor, in the converted roof space, the remaining two bedrooms and recently fitted shower room on the ground floor. Outside the well proportioned garden offers patio areas, storage sheds and the fantastic addition of an outhouse with wood burning stove suitable for use as home office or summerhouse.

SLDC band D. EPC rated TBC . Pets by consent. No smokers. Applicants in receipt of housing allowance will be considered with a guarantor, at the landlords discretion.

A Holding Deposit of £276, equivalent to one weeks rent, will be payable upon application, and before references are sought. Subject to satisfactory references and before the commencement of a tenancy, a Tenancy Deposit of £1380 equivalent to five weeks rent will be payable

Directions: